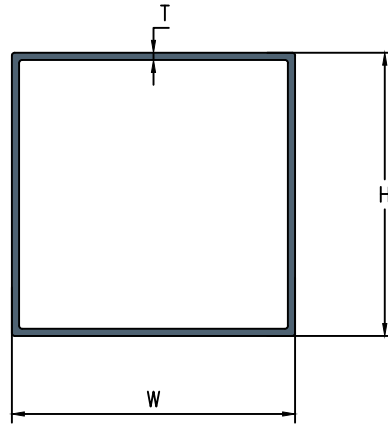


PARTITIONS

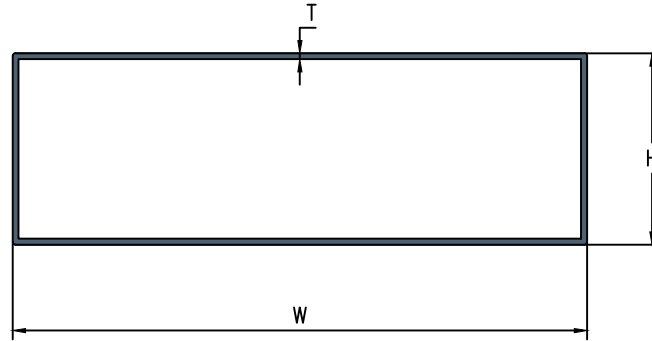
SQUARE TUBE



N0.	SECTION NO.	W	H	T	WEIGHT KG/12'
1	HD - 10200	19.00	19.00	0.88	0.600 - 0.800
2	HD - 10201	25.00	25.00	0.90	0.800 - 1.000
3	HD - 10201.1	25.00	25.00	1.80	1.500 - 1.700
4	HD - 10202	25.00	25.00	1.10	1.000 - 1.200
5	HD - 10203	38.00	38.00	0.97	1.400 - 1.600
6	HD - 10204	38.00	38.00	1.10	1.600 - 1.800
7	HD - 10205	38.00	38.00	1.22	1.800 - 2.000
8	HD - 10206	38.00	38.00	1.35	2.000 - 2.200
9	HD - 70105	40.00	40.00	2.80	4.100 - 4.500
10	HD - 10207	50.00	50.00	1.00	1.800 - 2.000
11	HD - 10208	50.00	50.00	1.10	2.000 - 2.200
12	HD - 10209	50.00	50.00	1.50	2.700 - 3.000
13	HD - 10210	50.00	50.00	2.10	3.900 - 4.100
14	HD - 10220	75.00	75.00	1.50	4.300 - 4.700
15	HD - 10211	20.00	20.00	1.80	1.200 - 1.300
16	HD - 10212	20.00	20.00	2.00	1.350 - 1.500
17	HD - 10213	30.00	30.00	1.80	1.900 - 2.100
18	HD - 10213.2	30.00	30.00	2.80	2.800 - 3.050
19	HD - 10214	40.00	40.00	1.80	2.500 - 2.750
20	HD - 10215	40.00	40.00	2.80	3.800 - 4.200
21	HD - 10216	50.00	50.00	2.00	3.500 - 3.850
22	HD - 10216.1	50.00	50.00	1.80	3.200 - 3.500
23	HD - 10218	50.00	50.00	2.80	5.000 - 5.500
24	HD - 10218.1	50.00	50.00	2.80	4.800 - 5.300

PARTITIONS

RECTANGULAR TUBE



N0.	SECTION NO.	W	H	T	WEIGHT KG/12FT
1	HD - 10000	38.00	25.00	0.88	1.000 - 1.200
2	HD - 10000.1	38.00	25.00	1.26	1.500 - 1.700
3	HD - 10000.2	38.00	25.00	1.70	2.000 - 2.300
4	HD - 10001	50.00	12.70	1.15	1.300 - 1.500
5	HD - 10002	50.00	19.00	1.18	1.500 - 1.700
6	HD - 10003.3	50.00	25.00	0.65	0.900 - 1.100
7	HD - 10003	50.00	25.00	0.78	1.100 - 1.300
8	HD - 10004	50.00	25.00	0.88	1.300 - 1.450
9	HD - 10005	50.00	25.00	1.00	1.400 - 1.600
10	HD - 10006	50.00	25.00	1.28	1.800 - 2.000
11	HD - 10007.1	50.00	38.00	1.00	1.700 - 1.900
12	HD - 10007	50.00	38.00	1.20	2.000 - 2.200
13	HD - 10008	50.00	38.00	1.40	2.300 - 2.500
14	HD - 10008.1	63.00	25.00	0.83	1.500 - 1.650
15	HD - 10009	63.00	38.00	1.15	2.200 - 2.400
16	HD - 10010	63.00	38.00	1.25	2.900 - 3.200
17	HD - 10011	63.00	38.00	1.45	3.400 - 3.600
18	HD - 10013.1	75.00	12.70	1.45	2.500 - 2.800
19	HD - 10013.2	75.00	19.00	1.52	2.700 - 3.000

N0.	SECTION NO.	W	H	T	WEIGHT KG/12'
20	HD - 10012.1	75.00	25.00	0.78	1.600 - 1.800
21	HD - 10012	75.00	25.00	1.05	1.900 - 2.100
22	HD - 10013	75.00	25.00	1.20	2.200 - 2.400
23	HD - 10014	95.00	24.00	1.00	2.100 - 2.300
24	HD - 10021	101.00	12.70	1.30	2.900 - 3.200
25	HD - 10022	101.00	19.00	1.45	3.400 - 3.700
26	HD - 10023	101.00	25.00	0.80	2.100 - 2.300
27	HD - 10024	101.00	25.00	0.95	2.300 - 2.600
28	HD - 10015	101.00	25.00	1.18	2.700 - 2.900
29	HD - 10016	101.00	25.00	1.32	2.900 - 3.100
30	HD - 10051	127.00	25.00	1.20	3.500 - 3.800
31	HD - 10042	40.00	20.00	1.80	1.850 - 2.050
32	HD - 10084	80.00	40.00	1.40	2.900 - 3.200
33	HD - 10085	80.00	40.00	1.80	3.800 - 4.150
34	HD - 10105	100.00	50.00	1.50	4.000 - 4.400
35	HD - 10105.1	100.00	50.00	1.80	4.800 - 5.300
36	HD - 10106	100.00	50.00	2.00	5.300 - 5.800
37	HD - 10106.1	100.00	50.00	2.80	7.400 - 7.900
38	HD - 10107	100.00	50.00	3.00	7.900 - 8.400