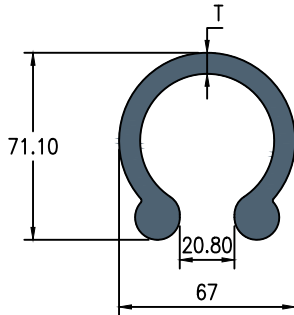


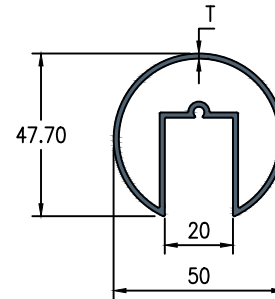
# RAILING SERIES

## CIRCLIP TOP



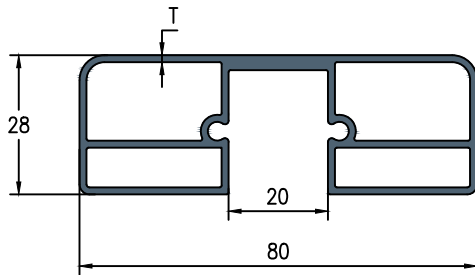
N0.	SECTION NO.	W	H	T	WEIGHT KG/12'
1	HD - 10710	67.00	71.10	8.00	15.500 - 16.000

## 50 MM RAILING TOP - RD



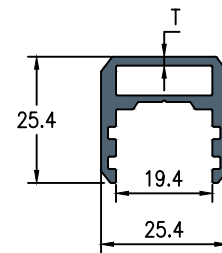
N0.	SECTION NO.	W	H	T	WEIGHT KG/12'
1	HD - 10700	50.00	47.70	1.50	3.000 - 3.300

## 80MM RAILING TOP



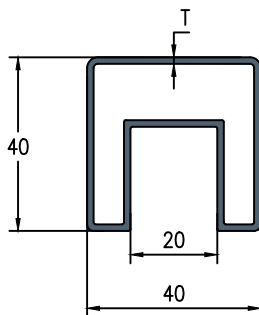
N0.	SECTION NO.	W	H	T	WEIGHT KG/12'
1	HD - 10728	80.00	28.00	1.40	4.400 - 4.800

## 25MM RAILING TOP



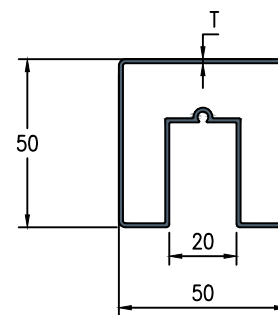
N0.	SECTION NO.	W	H	T	WEIGHT KG/12'
1	HD - 10675	25.40	25.40	1.80	1.900 - 2.100

## 40MM RAILING TOP



N0.	SECTION NO.	W	H	T	WEIGHT KG/12'
1	HD - 10740	40.00	40.00	1.50	2.900 - 3.200

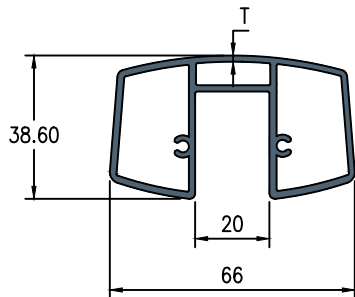
## 50MM RAILING TOP - SQ



N0.	SECTION NO.	W	H	T	WEIGHT KG/12'
1	HD - 10670	50.00	50.00	1.20	3.000 - 3.300

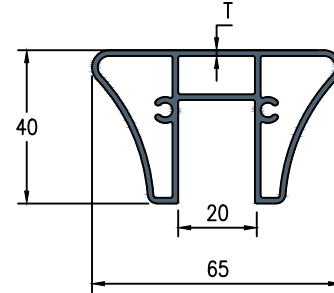
# RAILING SERIES

## 66MM RAILING TOP



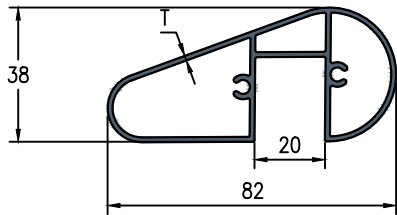
N0.	SECTION NO.	W	H	T	WEIGHT KG/12'
1	HD - 10690	66.00	38.60	1.85	4.400 - 4.700

## 65MM RAILING TOP



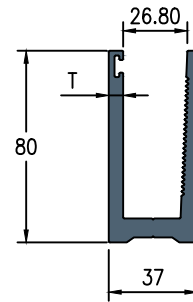
N0.	SECTION NO.	W	H	T	WEIGHT KG/12'
1	HD - 10745	65.00	40.00	1.50	4.000 - 4.400

## 82MM RAILING TOP



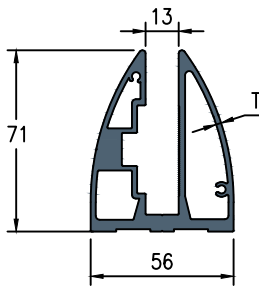
N0.	SECTION NO.	W	H	T	WEIGHT KG/12'
1	HD - 10741	82.00	38.00	1.40	4.000 - 4.400

## 80MM RAILING BOTTOM



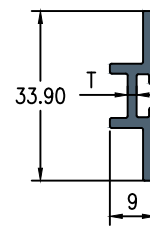
N0.	SECTION NO.	W	H	T	WEIGHT KG/12'
1	HD - 10660	37.00	80.00	6.00	10.500 - 11.000

## 71MM RAILING BOTTOM



N0.	SECTION NO.	W	H	T	WEIGHT KG/12'
1	HD - 10680	56.00	71.00	2.00	9.600 - 10.000

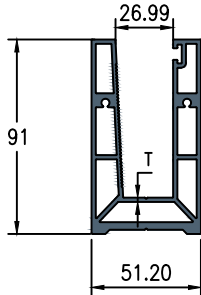
## H LONG



N0.	SECTION NO.	W	H	T	WEIGHT KG/12'
1	HD - 10650	33.90	9.00	2.00	1.000 - 1.200

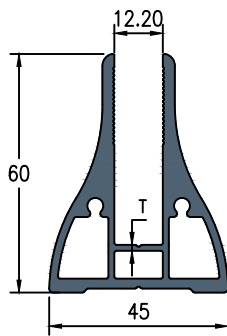
# RAILING SERIES

## 91MM RAILING BOTTOM



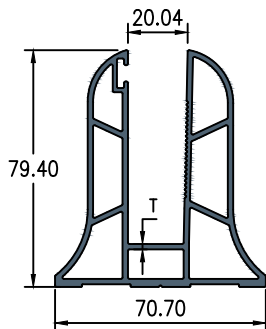
NO.	SECTION NO.	W	H	T	WEIGHT KG/12'
1	HD - 10681	51.20	91.00	2.00	10.900 - 11.500

## 60MM RAILING BOTTOM



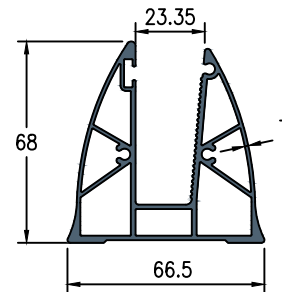
NO.	SECTION NO.	W	H	T	WEIGHT KG/12'
1	HD - 10661	45.00	60.00	1.50	6.300 - 6.800

## 79MM RAILING BOTTOM



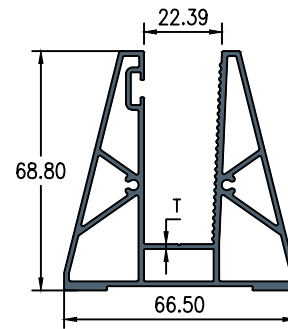
NO.	SECTION NO.	W	H	T	WEIGHT KG/12'
1	HD - 10682	70.70	79.40	1.80	8.500 - 9.000

## 68MM RAILING BOTTOM



NO.	SECTION NO.	W	H	T	WEIGHT KG/12'
1	HD - 10679	68.00	66.50	1.20	6.600 - 7.100

## 69MM RAILING BOTTOM



NO.	SECTION NO.	W	H	T	WEIGHT KG/12'
1	HD - 10678	66.50	68.80	1.40	6.800 - 7.300