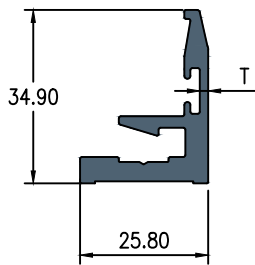


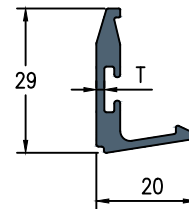
KITCHEN PROFILE

MALE PROFILE



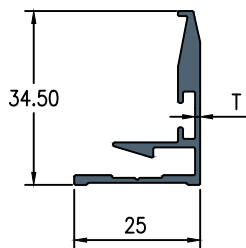
N0.	SECTION NO.	W	H	T	WEIGHT KG/10'
1	HD - 30000	34.90	25.80	1.70	2.100 - 2.300

FEMALE PROFILE



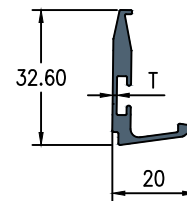
N0.	SECTION NO.	W	H	T	WEIGHT KG/10'
1	HD - 30010	29.00	20.00	1.60	1.100 - 1.200

MALE PROFILE



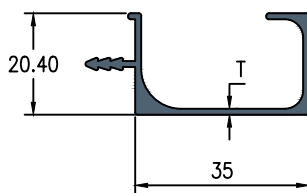
N0.	SECTION NO.	W	H	T	WEIGHT KG/10'
1	HD - 30001	34.50	25.00	1.00	1.050 - 1.150

FEMALE PROFILE



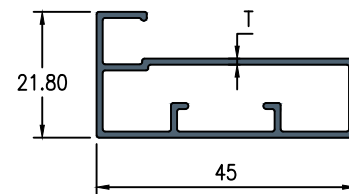
N0.	SECTION NO.	W	H	T	WEIGHT KG/10'
1	HD - 30011	32.60	20.00	1.00	1.000 - 1.100

35MM G HANDLE



N0.	SECTION NO.	W	H	T	WEIGHT KG/10'
1	HD - 30020	35.00	20.40	1.20	1.100 - 1.200

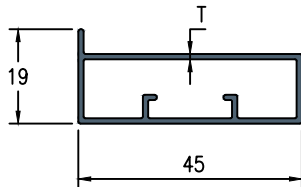
45MM FRAME



N0.	SECTION NO.	W	H	T	WEIGHT KG/10'
1	HD - 30030	45.00	21.80	1.00	1.200 - 1.300

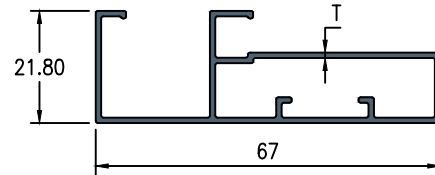
KITCHEN PROFILE

45MM FRAMELESS



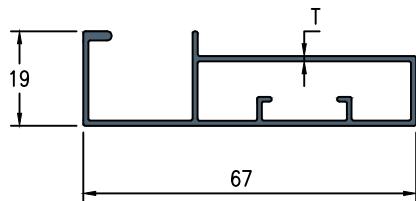
NO.	SECTION NO.	W	H	T	WEIGHT KG/10'
1	HD - 30060	45.00	19.00	1.10	1.150 - 1.250

67MM HANDLE



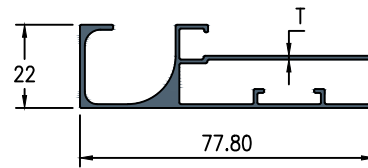
NO.	SECTION NO.	W	H	T	WEIGHT KG/10'
1	HD - 30040	67.00	21.80	1.10	1.700 - 1.850

67MM FRAMELESS



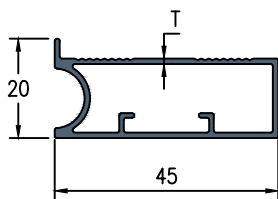
NO.	SECTION NO.	W	H	T	WEIGHT KG/10'
1	HD - 30070	67.00	19.00	1.00	1.550 - 1.700

78MM HANDLE



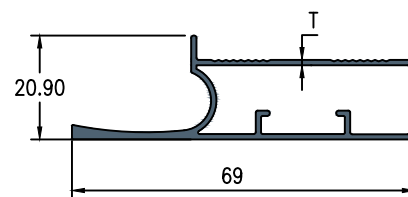
NO.	SECTION NO.	W	H	T	WEIGHT KG/10'
1	HD - 30050	77.80	22.00	1.00	2.050 - 2.250

GLASS FRAME



NO.	SECTION NO.	W	H	T	WEIGHT KG/10'
1	HD - 30080	45.00	20.00	1.10	1.250 - 1.350

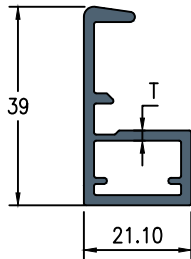
HANDLE



NO.	SECTION NO.	W	H	T	WEIGHT KG/10'
1	HD - 30090	69.00	20.90	1.10	1.550 - 1.700

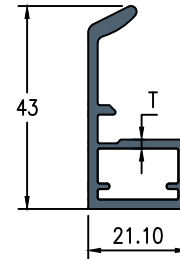
KITCHEN PROFILE

GLASS G-BOX



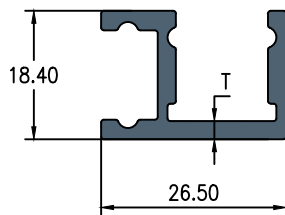
N0.	SECTION NO.	W	H	T	WEIGHT KG/10'
1	HD - 10590	21.10	39.00	2.00	2.000 - 2.200

GLASS INTERLOCK



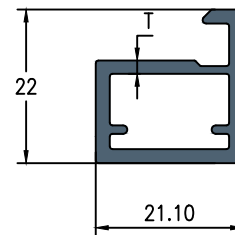
N0.	SECTION NO.	W	H	T	WEIGHT KG/10'
1	HD - 10600	21.10	43.00	2.00	2.000 - 2.200

GLASS CORNER



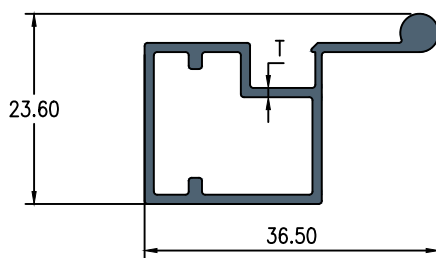
N0.	SECTION NO.	W	H	T	WEIGHT KG/10'
1	HD - 10610	26.50	18.40	2.60	1.500 - 1.700

GLASS INTERLOCK



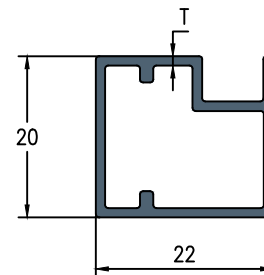
N0.	SECTION NO.	W	H	T	WEIGHT KG/10'
1	HD - 10620	21.10	22.00	2.00	1.400 - 1.600

G CLIP



N0.	SECTION NO.	W	H	T	WEIGHT KG/10'
1	HD - 10630	36.50	23.60	1.15	1.300 - 1.500

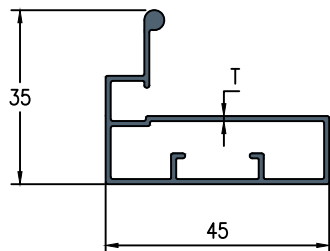
GLASS SS



N0.	SECTION NO.	W	H	T	WEIGHT KG/10'
1	HD - 10640	22.00	20.00	1.15	1.000 - 1.200

KITCHEN PROFILE

45MM FRAME PROFILE



NO.	SECTION NO.	W	H	T	WEIGHT KG/10'
1	HD - 30025	45.00	35.00	1.02	1.400 - 1.550